



# Environmental management

We operate the environmental management system based on ISO14001.

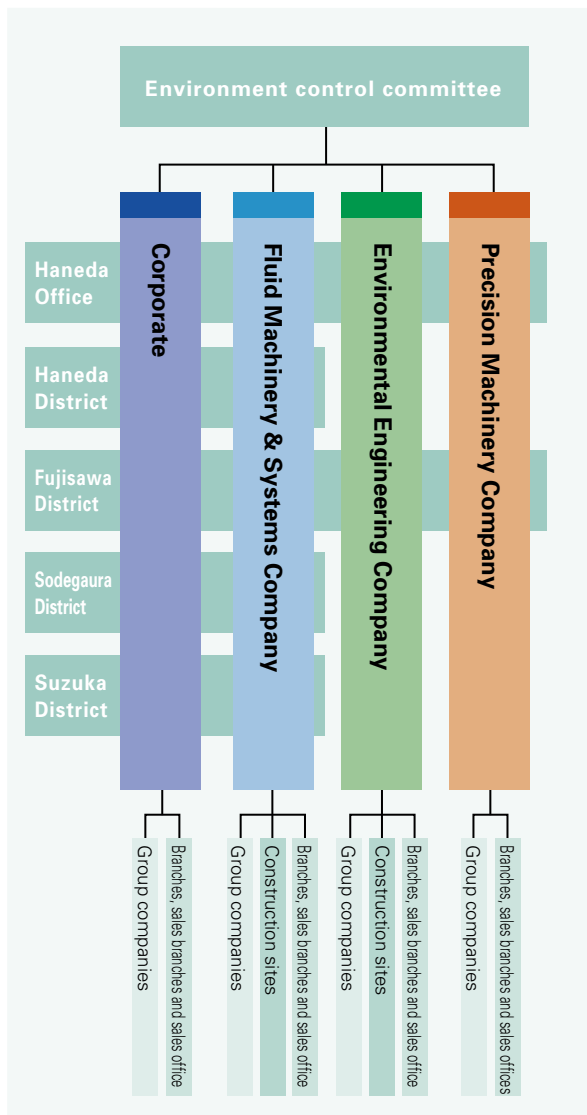
## Environmental management organization

Reduce the impact on the environment that derives from our business activities and continuously work on preventing environmental pollution.

The following chart shows an outline of the EBARA Group environmental management structure. We are working on both the environmental conservation of business hubs such as offices and districts and their surrounding areas (horizontal axis) and product and services-related environmental conservation (vertical axis).

### Environmental management structure

(As of May 1, 2008)



## List of EBARA Group ISO14001 registered organization

(As of March 31, 2008) In order of registered date

| Registered organizations<br>EBARA Group companies contained in the registration scope |  | Registered date    |
|---|--|--------------------|
| <b>EBARA</b>  |  |                    |
| ①   | Fujisawa District<br>[EBARA Refrigeration Equipment & Systems Co., Ltd.; EBARA Ballard Corporation; EBARA Research Co., Ltd.; A part of EBARA Agency Co., Ltd.; A part of EBARA DENSAN Ltd.; A part of EBARA Field Tech Corporation; A part of EBARA KIDEN Co., Ltd.; A part of ECE Co., Ltd.; A part of EBARA Environmental Engineering Corporation; A part of IT Engineering Limited; A part of EBARA Engineering Service Co., Ltd.; and A part of EBARA Techno-Serve Co., Ltd.] | February 5, 1997   |
| ②   | Haneda District<br>[EBARA Environmental Technologies Hokkaido Co., Ltd.]   | February 20, 1997  |
| ③   | Haneda Office*1<br>[EBARA Shinagawa Office, branches, sales branches and sales offices, EBARA Environmental Engineering Corporation head office, branches, sales branches and sales offices]   | November 21, 1997  |
| ④   | Sodegaura District<br>[Elliot EBARA Turbomachinery Corporation]  | January 21, 1998   |
| ⑤   | Suzuka District<br>[EBARA HAMADA BLOWER CO., LTD.]   | October 11, 2002   |
| <b>Japan Group companies (consolidated)</b>   |  |                    |
| ⑥   | EBARA Engineering Service Co., Ltd.  | July 18, 2000      |
| ⑦   | EBARA Field Tech. Corporation  | March 6, 2002      |
| ⑧   | EBARA Shinwa Ltd.  | July 18, 2002      |
| ⑨   | (EBARA Techno-Serve Co., Ltd.)<br>[A part of EBARA Refrigerator Equipment & Systems Co., Ltd.]   | November 8, 2002   |
| ⑩   | EBARA Kyushu Co., Ltd.   | November 18, 2002  |
| ⑪   | EBARA Industrial Cleaning Co., Ltd.  | April 23, 2003     |
| ⑫   | EBARA Yoshikura Hydro-Tech Co., Ltd.   | January 19, 2004   |
| ⑬   | EBARA DENSAN LTD.,   | February 27, 2004  |
| ⑭   | EBARA Metal Co., Ltd.  | April 21, 2004     |
| <b>Japan Group companies (nonconsolidated)</b>  |  |                    |
| ⑮   | Clean System Corporation   | October 28, 2004   |
| ⑯   | Chubu Recycle Co., Ltd.  | March 14, 2005     |
| ⑰   | J-TEAM Co., Ltd.   | July 28, 2006      |
| ⑱   | Oiwa Machinery Co., Ltd.   | July 19, 2007      |
| <b>Overseas Group companies (consolidated)</b>  |  |                    |
| ⑲   | Ebara Precision Machinery Europe GmbH  | October 16, 2003   |
| ⑳   | Yantai Ebara Air Conditioning Equipment Co., Ltd.  | September 26, 2005 |

\*1 [Haneda Office] Shinagawa Office except some sections that have moved to the Haneda Office.